

Photometric Report

ERA 800 – Narrow

MARTIN PROFESSIONAL R&D OPTICAL LABORATORY

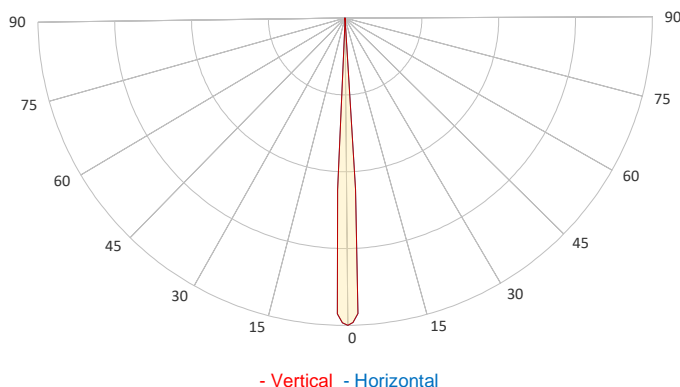
GENERAL SPECIFICATIONS

Total Fixture Output:	35000 lm
Light Engine Output:	70 klm
Efficacy:	15 lm/W
Lens Option:	N/A
Beam Angle (50%):	6-49°
Field Angle (10%):	°
Cut-off Angle (3%):	°
CRI:	70
CQS:	67
TM-30 Rf:	65
TM-30 Rg:	93
TLCI:	44
Color Temperature:	6900 K



SAMPLE MEASUREMENT

POLAR PLOT

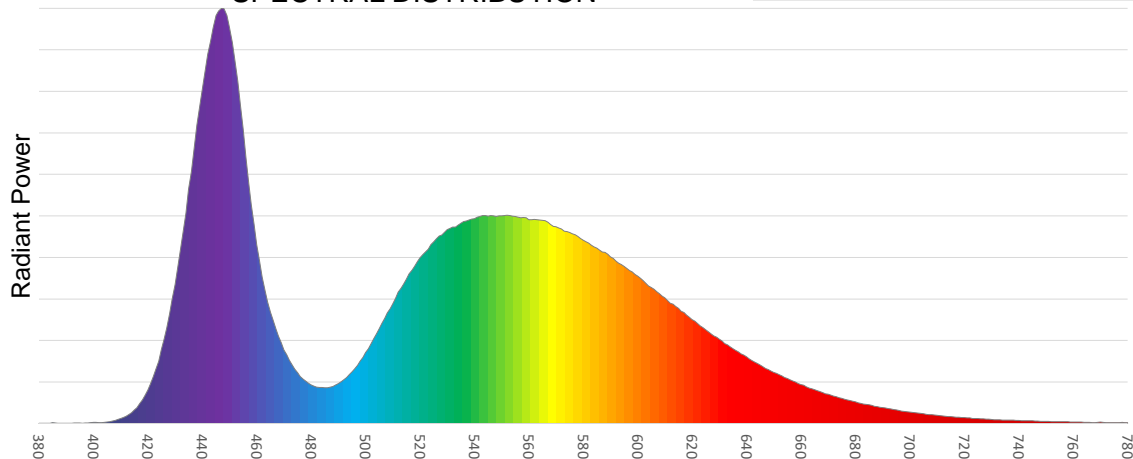


Catalog Number:	9025122052
Measured Output:	16700 lm
Measured Peak:	1705478 cd
Consumed Power:	1161.5 W
Efficacy:	14.9 lm/W

Beam Angle (50%):	6.1°
Field Angle (10%):	7°
Cut-off Angle (3%):	7.6°

Measurement Condition:	
Ambient Temperature:	25° +/- 5° C
AC Supply:	230V/50Hz
Fan Mode:	
Fixture Warm-up Time:	60 minutes

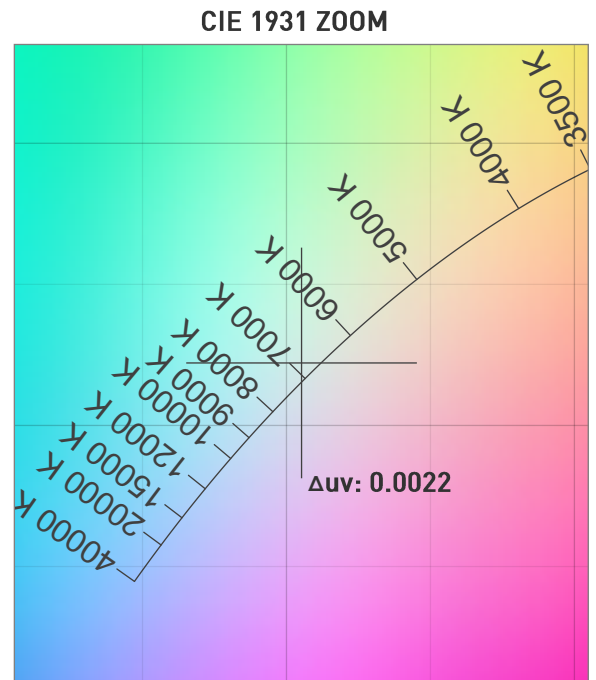
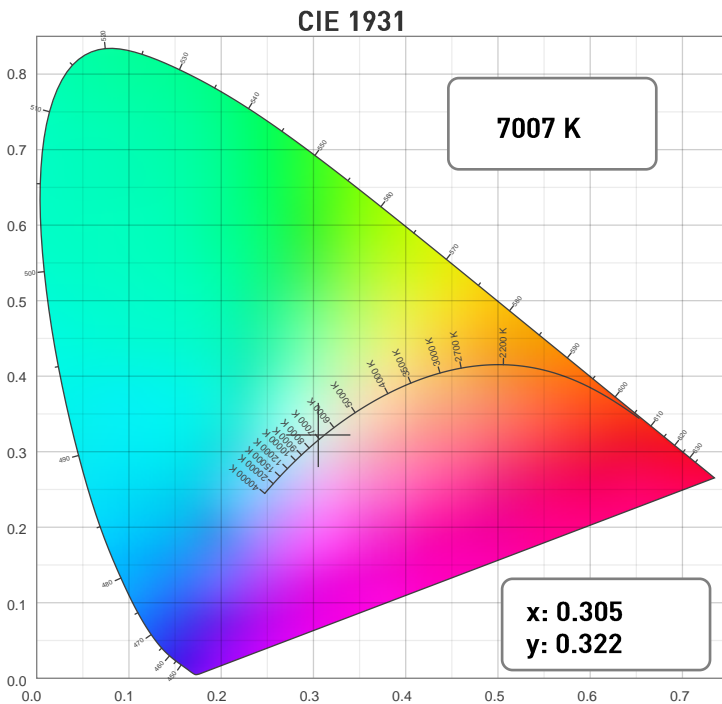
SPECTRAL DISTRIBUTION



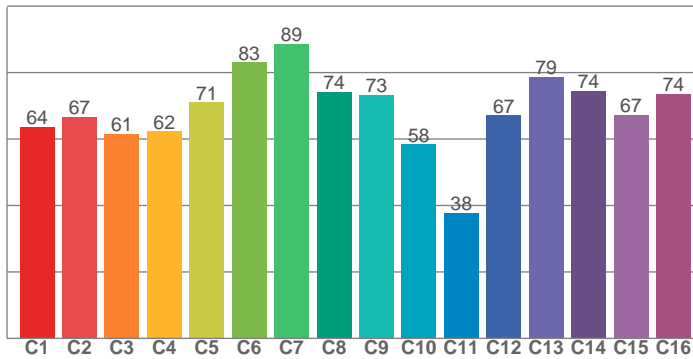
Photometric Report

ERA 800 – Narrow

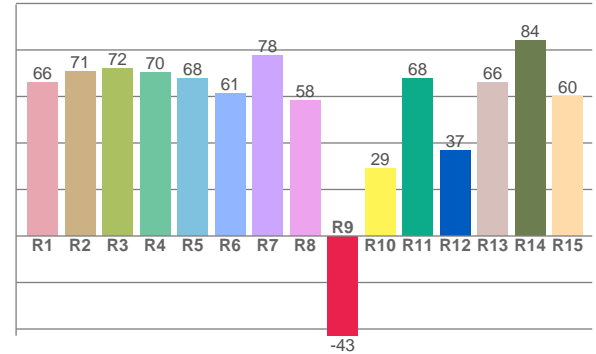
CHROMATICITY



TM30: 68.7



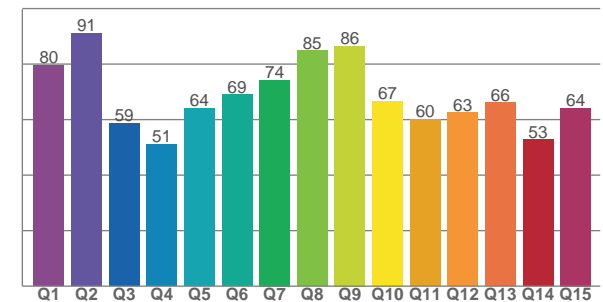
CRI: 68.0 (R1-R8)



COLOR PARAMETERS

Color Temperature	Color Rendering Index	Red Component	Color Fidelity	Color Gamut
CCT	CRI	CRI R9	TM30 Rf	TM30 Rg
7007 K	68.0	-42.9	68.7	92.6

CQS: 66.6



Television Lighting Consistency Index	Color Quality Scale	Color Coordinate CIE 1931	Color Coordinate CIE 1931	Color Coordinate CIE 1964	Color Coordinate CIE 1964	Color Deviation from Black Body
TLCI	CQS	x	y	u	v	Δuv
44	66.6	0.305	0.322	0.195	0.309	0.0022

Photometric Report

ERA 800 – Narrow

TM30

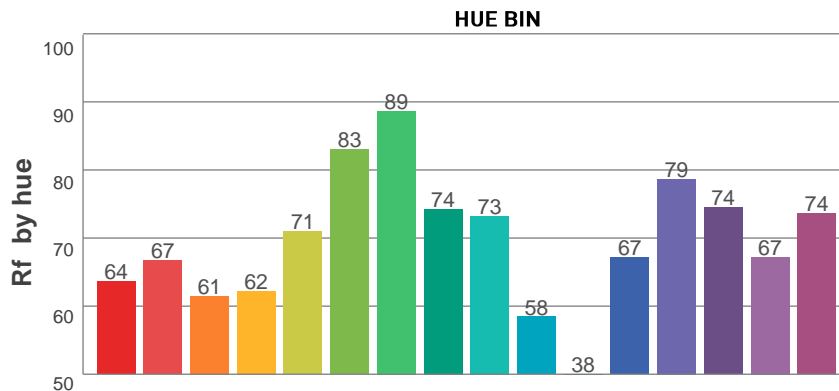
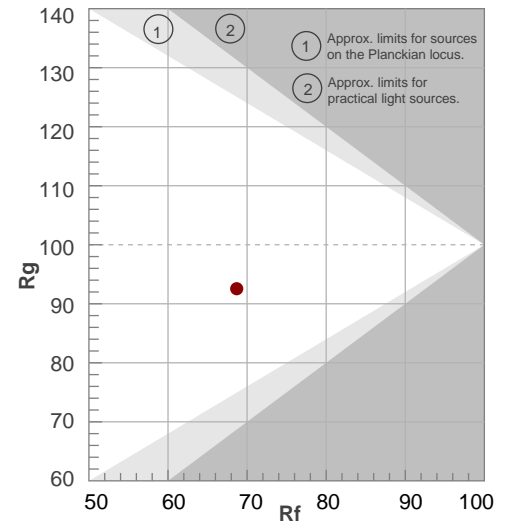
Rf 68.7

Fidelity index Rf

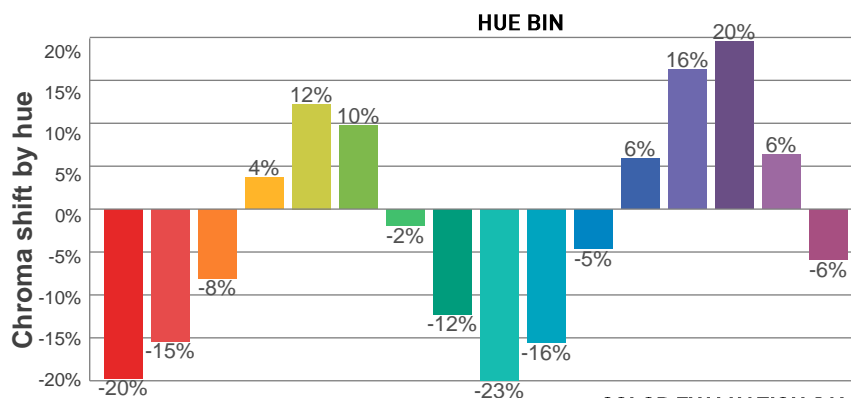
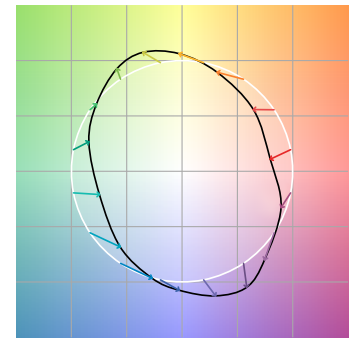
Rg 92.6

Gamut index Rg

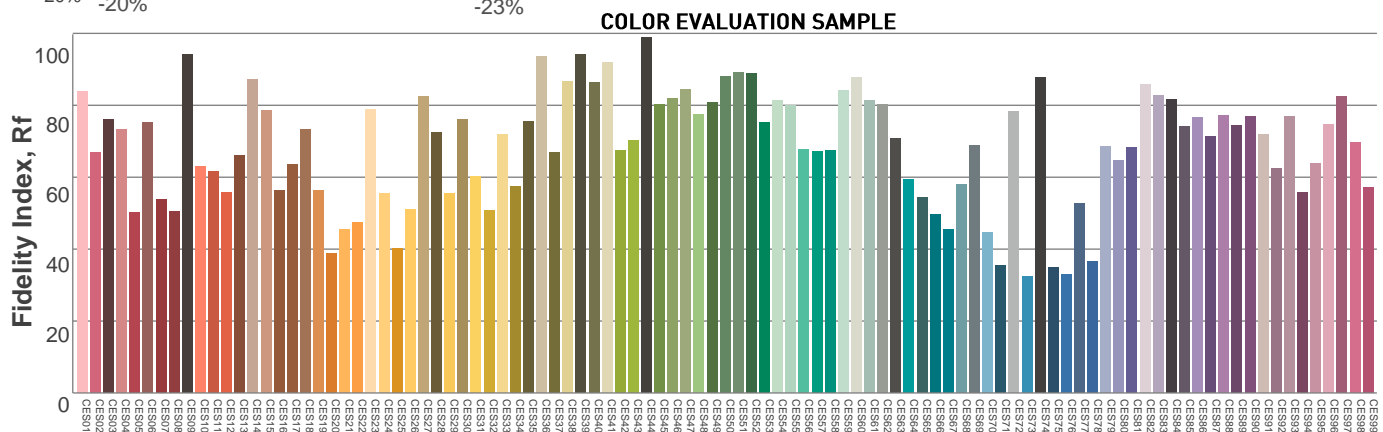
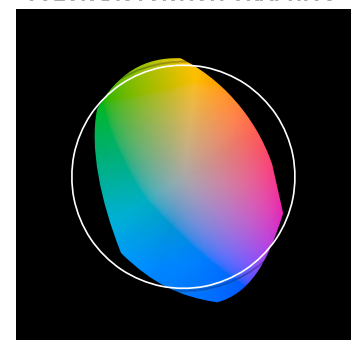
Hue Bin	R _f	Graphic shifts (%)	
		Chroma	Hue
1	64	-20%	-5%
2	67	-15%	11%
3	61	-8%	23%
4	62	4%	23%
5	71	12%	14%
6	83	10%	-3%
7	89	-2%	-8%
8	74	-12%	-10%
9	73	-23%	6%
10	58	-16%	26%
11	38	-5%	31%
12	67	6%	18%
13	79	16%	8%
14	74	20%	-10%
15	67	6%	-25%
16	74	-6%	-15%



COLOR VECTOR GRAPHICS



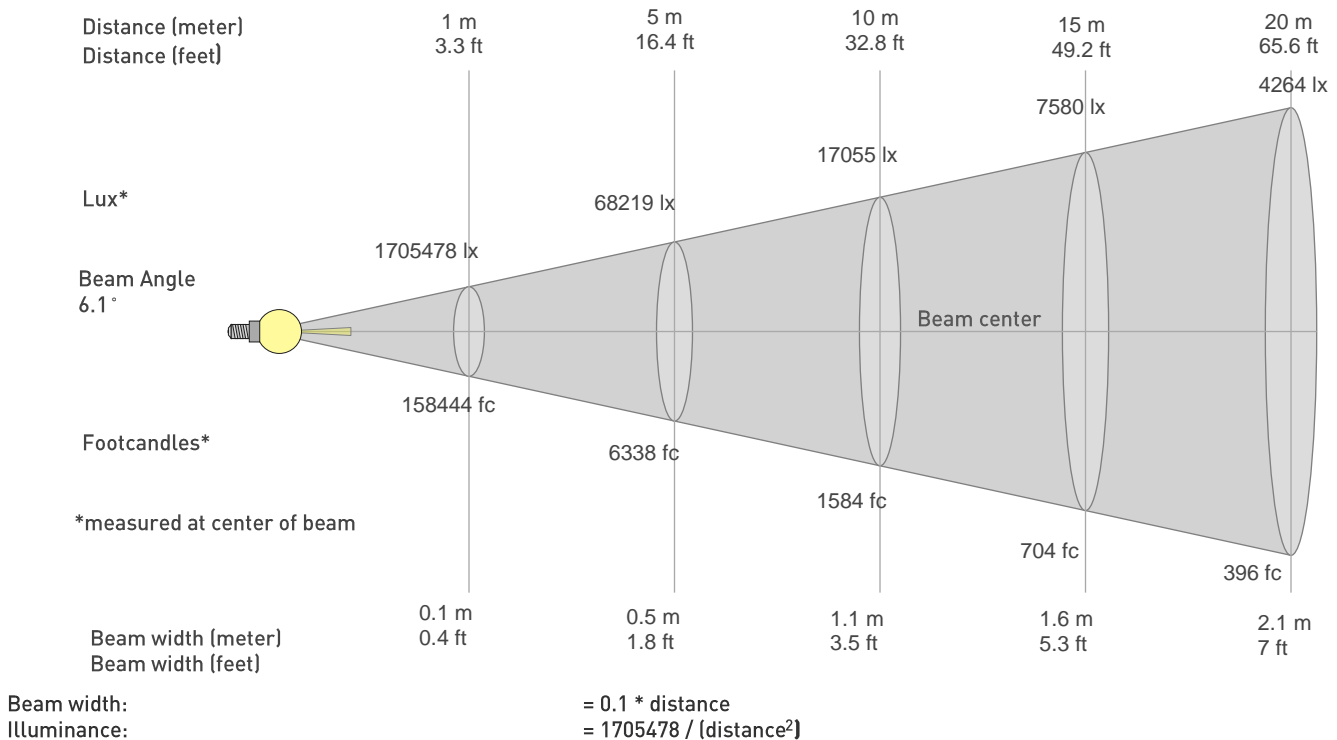
COLOR DISTORTION GRAPHICS



Photometric Report

ERA 800 – Narrow

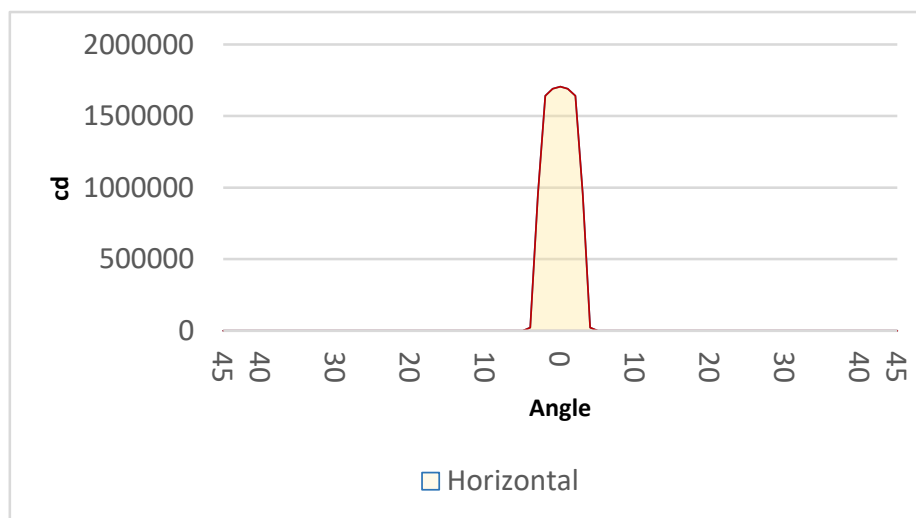
BEAM DETAILS



distance in [m] for illuminance in [lux] distance in [ft] for illuminance in [fc]

BEAM ILLUMINANCE FROM 1-20M

1m	2m	3m	4m	5m	6m	7m	8m	9m	10m	11m	12m	13m	14m	15m	16m	17m	18m	19m	20m
3.3ft	6.6ft	9.8ft	13.1ft	16.4ft	19.7ft	23ft	26.2ft	29.5ft	32.8ft	36.1ft	39.4ft	42.7ft	45.9ft	49.2ft	52.5ft	55.8ft	59.1ft	62.3ft	65.6ft
1705478lx	426369lx	189498lx	106592lx	68219lx	47374lx	34806lx	26648lx	21055lx	17055lx	14095lx	11844lx	10092lx	8701lx	7580lx	6662lx	5901lx	5264lx	4724lx	4264lx
158444.1fc	39611fc	17604.9fc	9902.8fc	6337.8fc	4401.2fc	3233.6fc	2475.7fc	1956.1fc	1584.4fc	1309.5fc	1100.3fc	937.5fc	808.4fc	704.2fc	618.9fc	548.2fc	489fc	438.9fc	396.1fc



BEAM ANGLE 50%	FIELD ANGLE 10%	CUTOFF ANGLE 3%
6.1°	7°	7.6°